

REQUEST | project data

Specification of: **DDM 9/9 E6G3501 1F 4P 1V +SCT == 6N02H5**

High performance centrifugal fan DDM

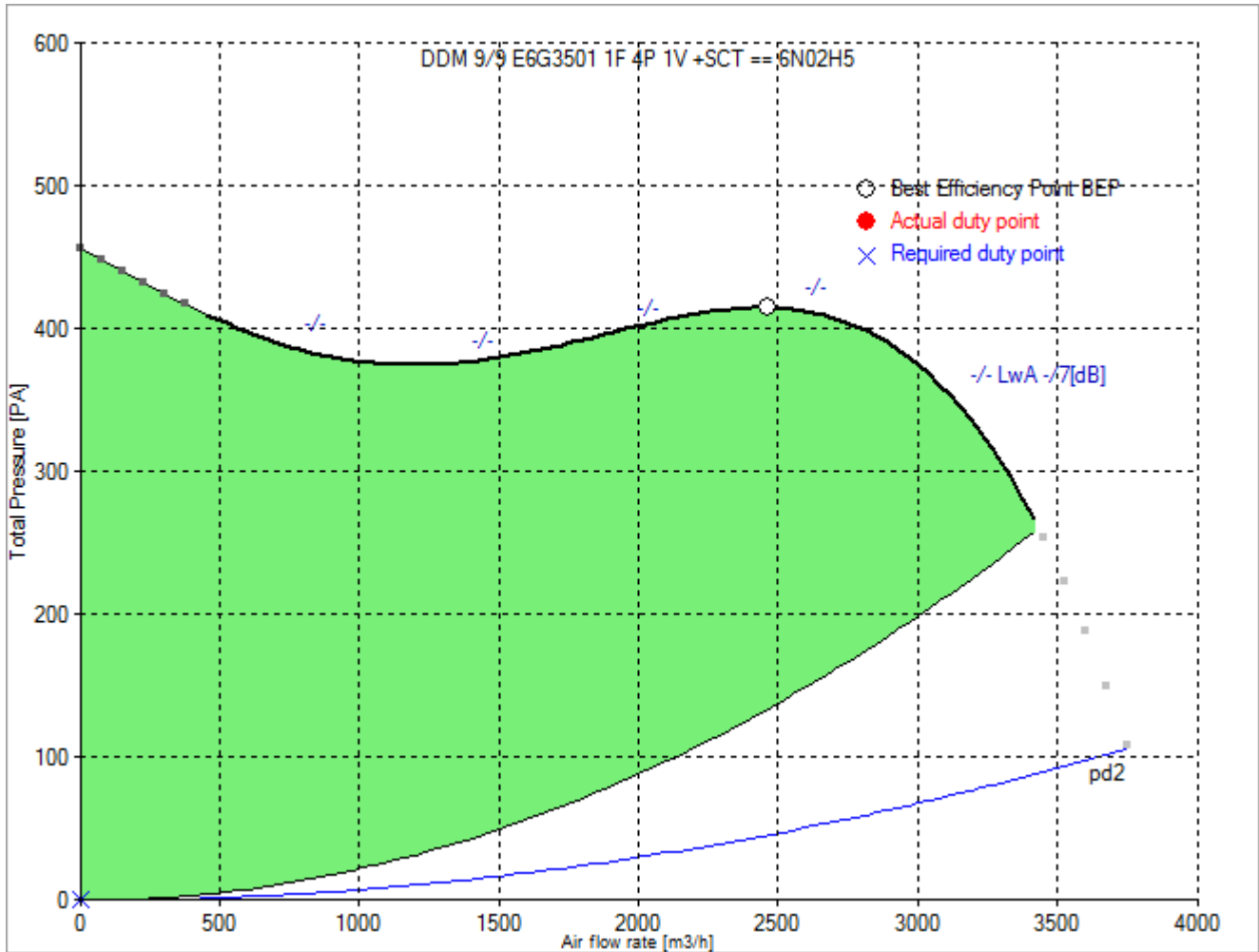
Double width, double inlet (DWDI), direct drive, forward curved blades fan. Lap-jointed scroll made of galvanized steel (EN 10142), assembled through a high-technology roller-locked seaming. Straight cut off plate at fan discharge. Impeller with forward curved blades of galvanised steel plate, directly mounted on a "External Rotor" motor for no transmission losses. Closed (IP 55) frame, single-phase, voltage controllable motor, usable at 230 V, 50 Hz. With built-in thermal protection device. Maintenance free, integral vibration isolators, self aligning ball bearings. Dynamically balanced according to DIN ISO 21940-11. With mounted terminal box. Air performance ratings according to AMCA 210-99 (Fig. 12), UNI 10531 (Fig 30c and par. 29.2 f) and ISO 5801 (Fig. 69 c and par. 30.2 f).

Technical data of the fan: DDM 9/9 E6G3501 1F 4P 1V +SCT == 6N02H5

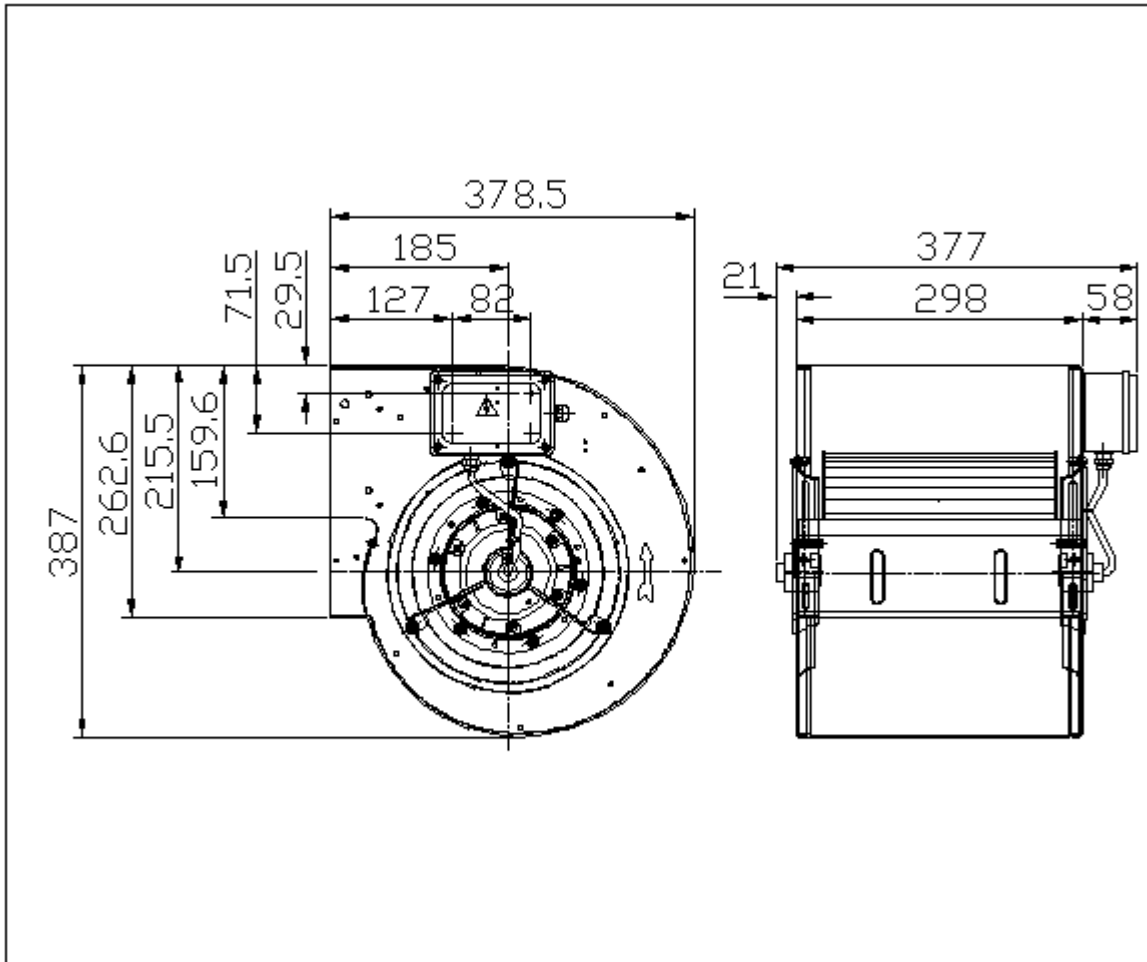
[fulfills the ErP requirements 2015](#)

Description	Value Dimension
Specified duty point	
Actual duty point	
Installation acc. DIN 24163 Part 1	B
Reference density (ρ_1)	1.20 kg/m ³
Medium temperature (t)	20 C
Fan weight	17 kg
Rated data	
Phases-Voltage-Frequency	1~230-50 V-Hz
Number of poles:	4
Motor rating (P_N)	0.55 kW
Rated motor speed (n_N)	1290 min ⁻¹
Rated motor current (I_N)	4,7 A
Capacitor (C)	12,5 μ F
operational limits	
Max. absorbed power (P_{1max})	1.1 kW
Temperature range of conveying medium ($t_{min} \dots t_{max}$)	-20...40 C
ErP-Data at best efficiency and density - kg/m³	
measurement- / efficiency category	B / total
design status of VSD	without VSD
overall efficiency (η_{Aopt})	41.3 %
achieved efficiency grade (N_{ist})	49.0
required efficiency grade in 2013 / 2015 (N)	42 / 49
Air flow rate (V_{opt})	2192 m ³ /h
pressure rise (dp_{opt})	411 Pa
Fan speed (n_{vopt})	1370 min ⁻¹
motor power input (P_{1opt})	0.604 kW
specific ratio (d_{dpopt})	1.004

Fan curve to DDM 9/9 E6G3501 1F 4P 1V +SCT == 6N02H5



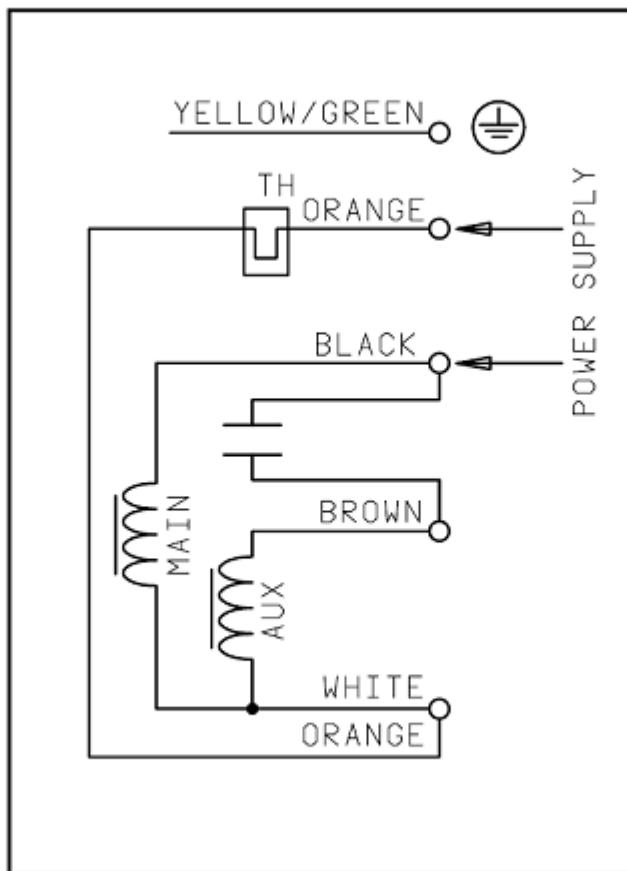
Dimensions to DDM 9/9 E6G3501 1F 4P 1V +SCT == 6N02H5



Rotation:
Handing:

RD
90

Wiring diagram of the fan DDM 9/9 E6G3501 1F 4P 1V +SCT == 6N02H5



20-09-2006 34

Wiring diagram for connection to: [mains - terminal box - motor](#)
Rotation: [LG](#)